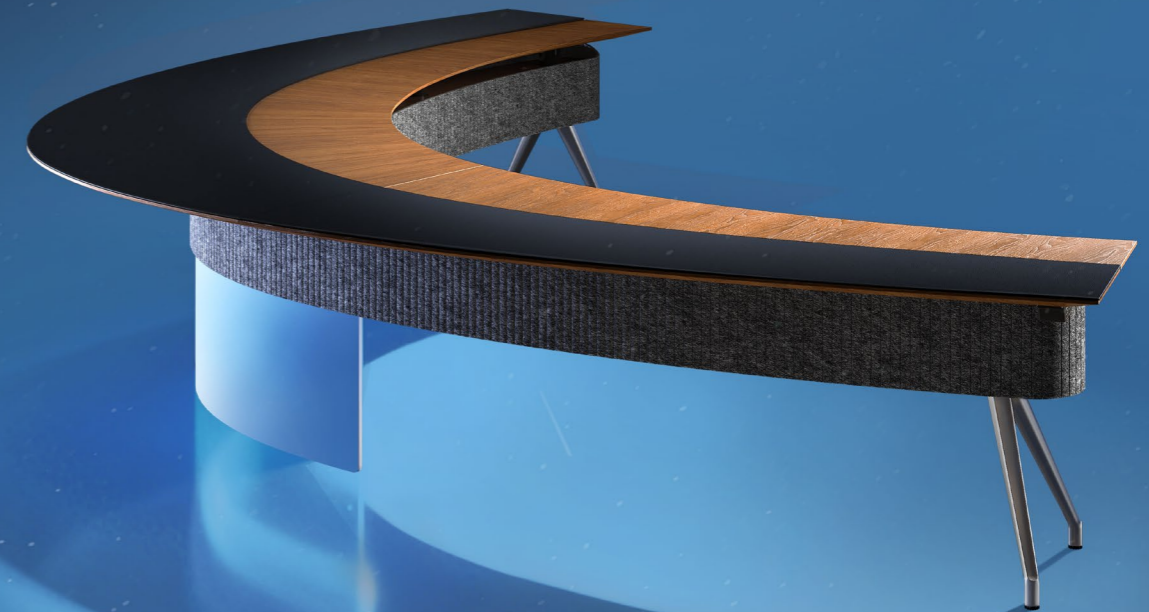


Sunón



Sunón

European R&D Center

Add: Brunnenstrasse 156, 10115 Berlin, Germany

Sunon Mexico Manufacturing Base & Experience Center

Add: Calle Palomas No. 201, Parque Industrial Hofusan, Salinas Victoria, Nuevo León CP 65500

USA Headquarters & Experience Center

Add: 311 N Green Street, Suite 900, Chicago IL 60607

Singapore Branch & Experience Center

Add: #01-02 R Building, 18 Robinson Road, Singapore 048547

India Branch & Experience Center

Add: Floor I & II, 643, Rd Number 36, Aditya Enclave, Venkatagiri, Jubilee Hills, Hyderabad, Telangana 500033, India

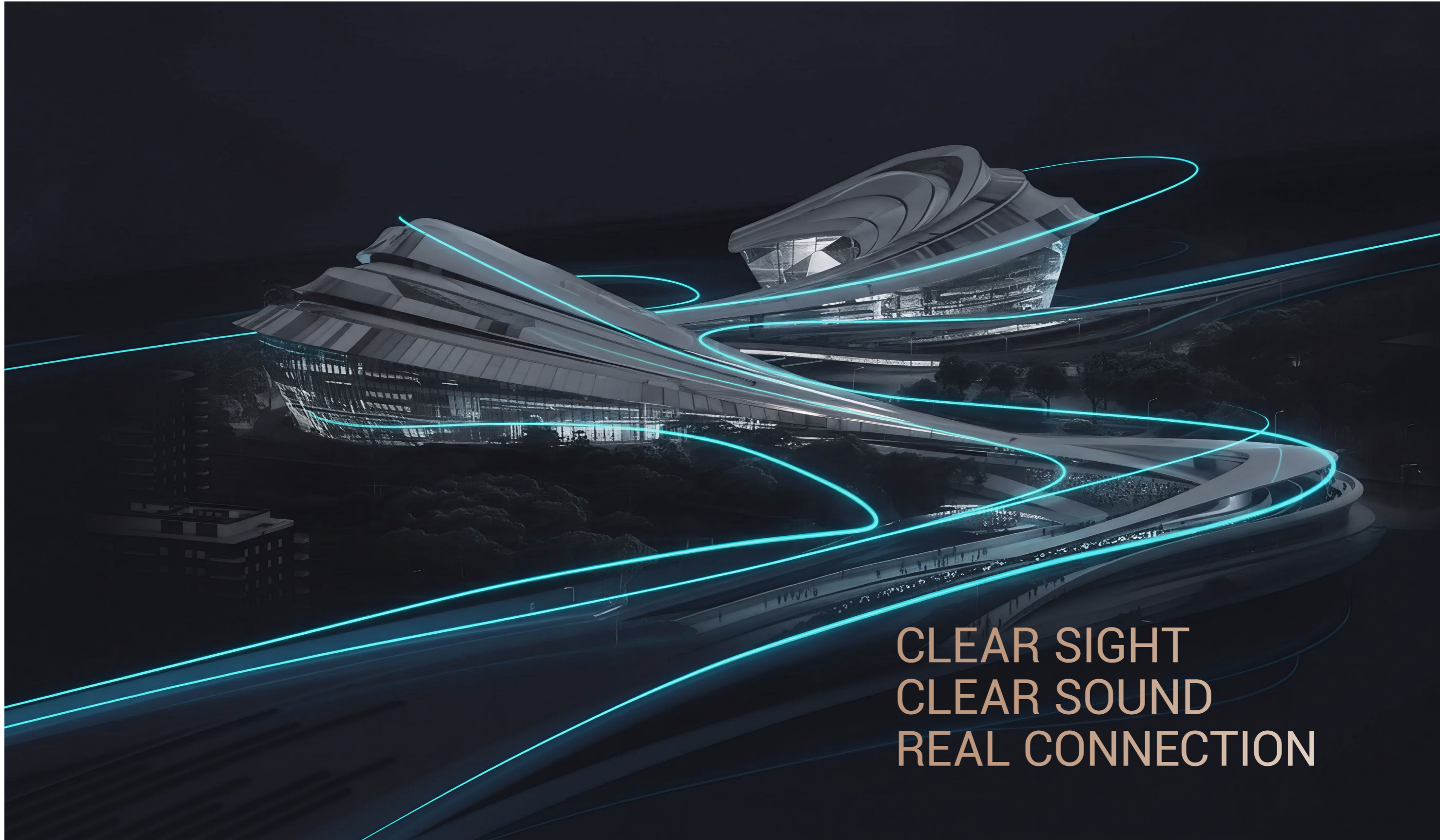
Headquarters & Experience Center - Sunon Technological Innovation Park

Add: No.1666 Zhixing Road, Xiaoshan District, Hangzhou, Zhejiang, China

     @sunonfurniture www.sunonglobal.com info@isunon.com



V-VARNA



CLEAR SIGHT
CLEAR SOUND
REAL CONNECTION



Open Views, Boundless Collaboration

V-Varna draws inspiration from global council chambers, forming an embracing arc that shapes the decision space. Its sweeping curve removes physical edges, while subtle lighting responds to every presence. In this space, the focus is always on the center.



① Side-Mounted Power Access: Power and cable access are built into both sides of the table, keeping devices within easy reach.



② Concealed Cabling: Cables are routed inside the cabinet to maintain a clean, composed workspace.



Sleek form, silent strength

A precision-beveled tabletop tapers from 40 mm to 10 mm for a lighter profile. Slender legs support up to 374 kg, tested to BIFMA standards. Strength and elegance, in balance.



Fluid Form for Natural Interaction

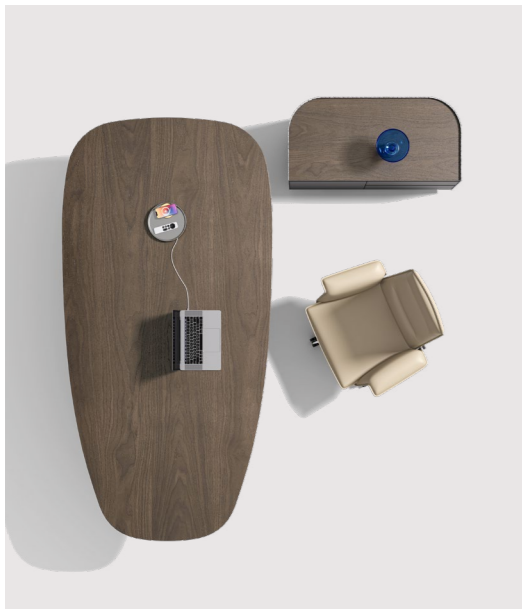
The tapered, open form supports clear sightlines and more natural communication.

A circular tray integrates 10W wireless charging. A 180° rotation reveals built-in outlets for multiple devices.



Two Realms, One Table

From collaborative sessions to focused work, the table transitions effortlessly between settings. Felt lining beneath the surface adds a softer touch and subtly defines personal space.



Instant Collaboration, Spontaneous Ideas

Designed for two to three people, this space opens up immediately for focused discussion and rapid brainstorming.



Magnetically embedded soft-close doors provide smooth, silent operation and have been tested for 50,000 cycles for lasting reliability.

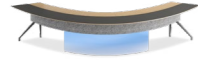


Specification

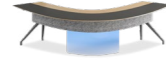
Conference Table



EN74-2.540250
W5400*D2500*H760(mm)



EN74-2.420200
W4200*D2000*H760(mm)



EN74-2.320162
W3200*D1620*H760(mm)

Negotiation Table



EN73-2.150142
W1500*D1420*H760(mm)

Multifunctional Table



EN73-2.280120
W2800*D1200*H760(mm)



EN73-2.240120
W2400*D1200*H760(mm)



EN73-2.200120
W2000*D1200*H760(mm)

Side Cabinet



EN94-2.100048
W1000*D480*H670(mm)

Storage Cabinet



EN95-2.240040
W2400*D400*H810(mm)



EN95-2.160040
W1600*D400*H810(mm)



EN95-2.120040
W1200*D400*H810(mm)

Monitor Stand with Cabinet



EN96-2.272059
W2720*D595*H1755(mm)



EN96-2.137059
W1370*D595*H1755(mm)

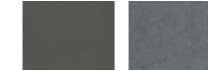
Material

Main Color



W-33B W-30B W-24B

Secondary Color



E-10 Gray felt

Aluminum-alloy Feet



Polished Meteor Grey

鉴于产品不断更新, 日后产品规格等若有变动, 以实物为准, 不再另行通知。

Given that products may be updated constantly, no further notice will be given in regard of changes in specification, and the real product shall be considered as final.